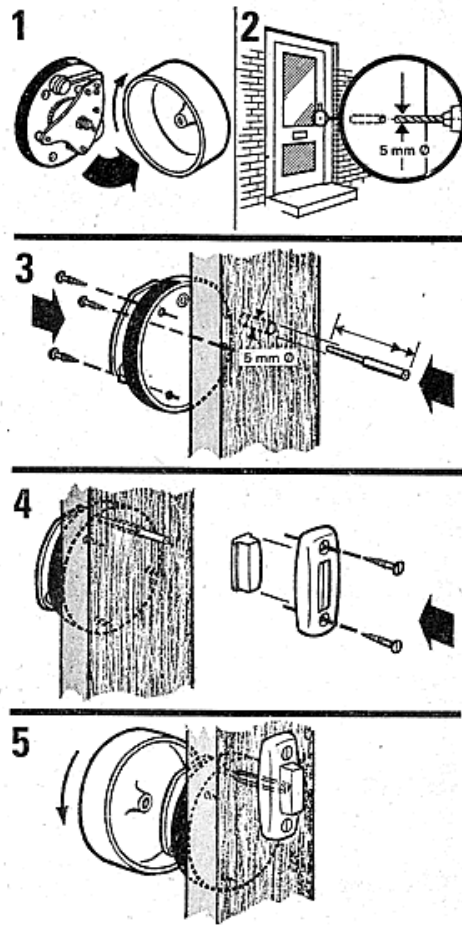


## *The Imperial Wind-up Doorbell*



### Notes :

- The bell unit is normally attached to the door itself rather than a door frame.
- A hole of 5mm diameter will need to be drilled through the door for the rod to release the wind up mechanism.
- The Doorbell is supplied fully wound, please do not wind further, as this may cause the mechanism to jam.
- The rod is adjustable in length, to cope with typical door thicknesses. If your door is particularly thick or thin, additional special length rods can be supplied at no extra cost.
- Additional replacement mechanisms can be supplied if necessary.