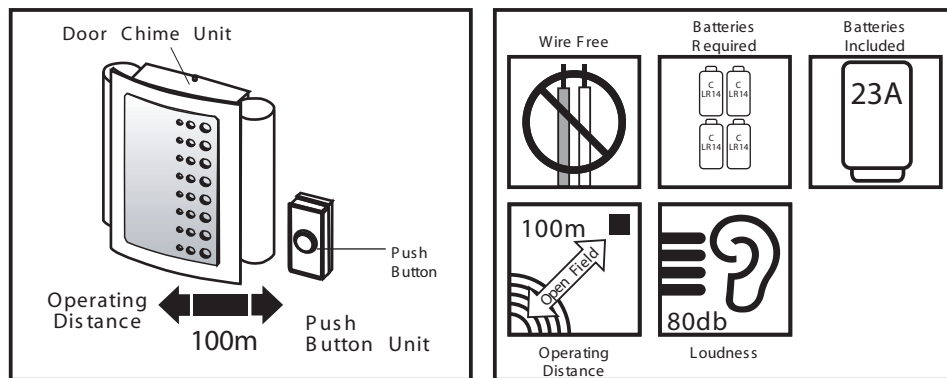


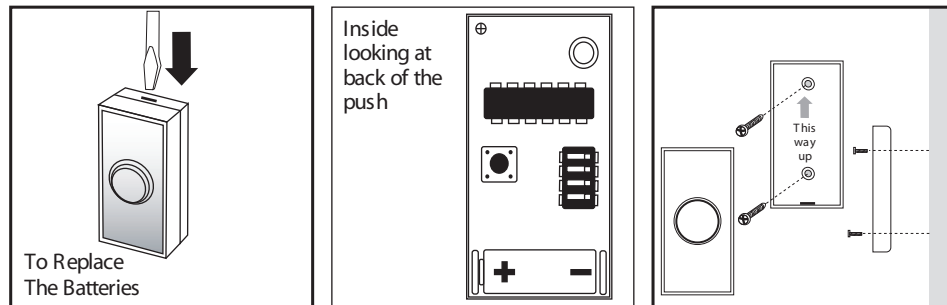
Byron Wire Free Traditional Chime Kit



No wiring is required for this Wire Free Door Chime Kit. When the Push Button is pressed, it sends a wire free signal to the door chime unit that activates the chime. As the operating range is upto 50 metres (160 ft. approx. - in open field), you can mount or take the door chime virtually anywhere in the home. However, the transmission range of the wire free signal will be reduced if the signal is transmitted through a number of walls or ceilings. Metal, and UPVC doorframes will also reduce the operating range.

Push Button Unit

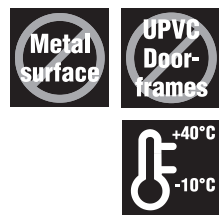
To inset your 1 x 12 volt 23A Lithium batteries (Byron SD-100) .



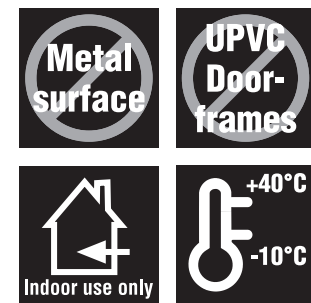
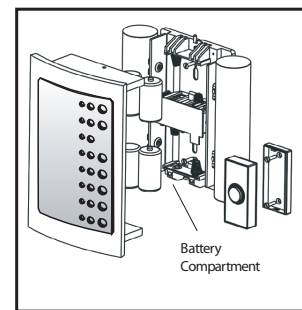
Remove the back of the case by pushing in the tab on the bottom with a small, flat screw driver.

Insert 1 x 23A volt battery (Byron SD100) in the battery compartment, ensuring the battery polarity matches the internal markings.

Using the two holes on the back of Push Button as a template, mark the fixing position for the unit. Drill holes and fit wall plugs and secure the Push Button unit with screws (self tapping N3 x 16mm screw).



Door Chime Unit



To reveal the battery compartment, Gently lift the lid up and away from the base. Insert 4 x 1.5 volt alkaline batteries ("C", LR14 - not included) into the battery compartment, ensuring the battery polarity matches the internal markings. To replace the cover locate the hole in the lid onto the base. The chime unit is now ready to use.

To fix your chime to the wall you will find holes in the middle of the base at the top and bottom. First mark the point of the top hole.

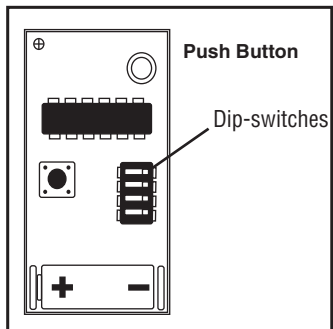
Using the provided screws and wall-plugs, screw the chime to the wall so that the bottom of the chime swings left and right. You can now align the chime in order that it hangs straight. Mark the bottom hole, remove the chime from the wall in order that you can prepare the wall for the bottom screw. Now you are ready to screw your chime to the wall

CE 0681



Code Set Up

The unit comes from the factory on a pre-set code. However, should your door chime activate intermittently for no reason at all, it is possible that a similar unit is operating nearby on the same code. The encoded frequency of the Push Button (transmitter) can be changed to avoid this problem.



1. Remove the back of case of Bell Push unit.
2. There is a 4-position dipswitch marked 1,2,3 & 4. Use an screwdriver to alter the dip switch levers to the "On/Off" position, which can be altered to achieve total sixteen (16) possible digital codes.
3. Select any combination on the Push Button.
4. Select the exact same code in the chime as you have done in the push. The dip switch is located on the circuit board in the middle of the chime, under the cover.
5. Test to ensure correct operation before final installation.

Important

1. Do not mount either unit close to fireplace or expose to high temperatures.
2. Do not expose the Door Chime unit to direct sunlight or moisture.
3. Always use alkaline battery. Please dispose of old, defective batteries in an environmentally friendly manner in accordance with the relevant legislation.
4. Make sure that no naked flame sources, such as lighted candles, should be placed on the unit.
5. The unit should not be exposed to dripping or splashing and that no objects filled with liquids, such as vases, shall be placed on the unit.
6. **CAUTION:** Replace only with the same or equivalent type of battery that is recommended by the manufacturer.
7. **CAUTION:** Danger of explosion if battery is incorrectly installed or replaced.

Trouble Shooting & User Hints

Problem	Possible Causes	Suggested Remedy
Chime does not sound but LED lights on Push Button	1. Units is out of range (max. range 100M) 2. Push Button and Chime units are not on same digital code	1. Operate the Chime unit within the operation range (100M) 2. Re-set the digital code (see Digital Code Set Up)
Chime does not sound plus no lights on Push Button LED	1. Flat Push Button battery 2. Wrong polarity of battery in Push Button	1. Change the battery 2. Re-insert battery as internal marking in right polarity
Chime sounds without Push Button being pressed	A similar Wire Free Door Chime product is operating nearby on the same frequency digital code	Change the digital code (see Digital Code Set Up)

Important: There are no serviceable parts in the unit, do not attempt to repair it.

Specification

A. Push Button unit		B. Door Chime unit	
Power	: 1 x 12 volt Lithium battery (23A - included)	Power	: 2 x 1.5 volt alkaline batteries ("AA", UM3 & LR6 - not included)
Consumption	: 7.0mA - ON 0.003mA - OFF	Consumption	: 100mA - ON / 0.3mA - Stand By
		Operating Temperature	: -10°C to +40°C
		Operating Distance	: 100 metres (320 feet approx.) in open field
		Selectable Tone	: Total eight (8) tones available
		Selectable Digital Code	: Total sixteen (16) possible digital codes

Type R2 Device - device where the sound output is created by the initial operation of the control and where the period of sound output continues for designed duration irrespective of condition of the control.

C H Byron
34, Sherwood Rd
Aston Fields
Bromsgrove
B60 3DR

Helpline: 0845 2301231